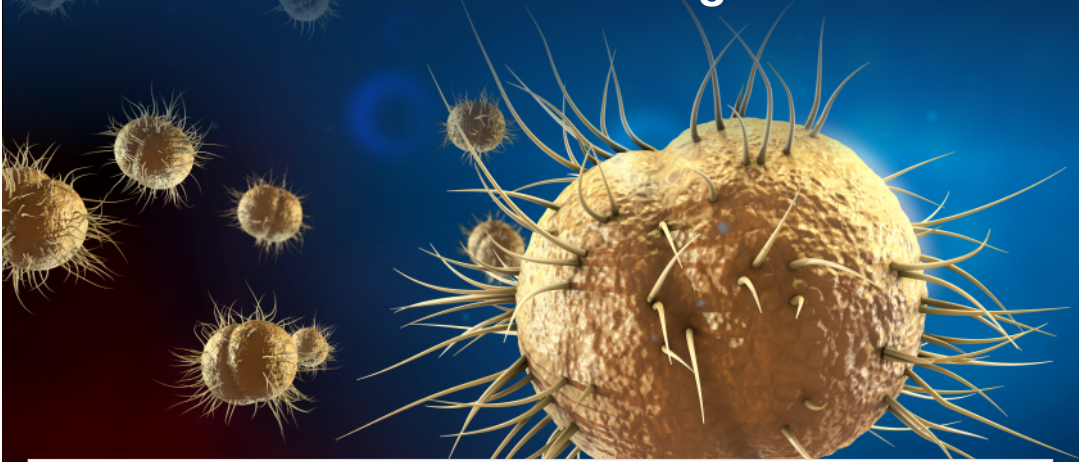


Early Diagnosis of Gonorrhoeae with PCR Testing



Significance

The Neisseria gonorrhoeae PCR test is used to detect the presence of the bacteria Neisseria gonorrhoeae, which causes gonorrhoea, a common sexually transmitted infection (STI). It identifies the genetic material (DNA) of the bacteria through PCR technique, making it highly sensitive and accurate. This test helps in early diagnosis, even when symptoms are mild or absent and prevent complications & further spread of infection.

Neisseria Gonorrhoeae PCR

₹3920/-



First National Diagnostic Chain to have **100%** of its Labs with **NABL Accreditation**



CAP
From 2007



Trust that Thyrocare reports are **Accurate & Reliable***



98% Reports released **Within 06 hours** after samples reach the lab

*As on 5th December 2024 | *As per a survey on doctors' perception of laboratory diagnostics (IJARIIT, 2023)

To Avail Service



Tests you can trust