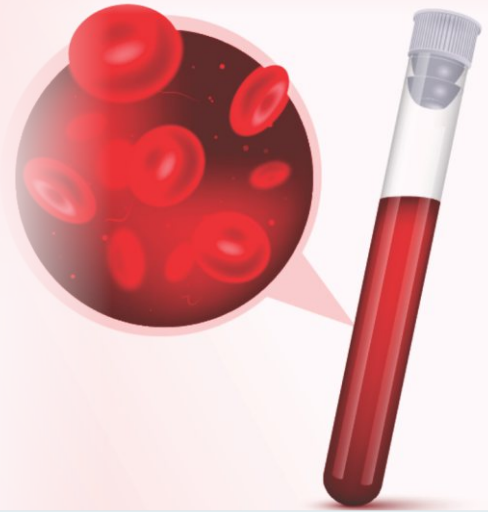


Test for Diagnosing Blood Related Disorders



Peripheral Blood Smear (PBS) [3 Tests]

@ ₹720/-

► Platelet Count | ► Total RBC | ► White Blood Cells

Significance

The test examines a sample of blood under a microscope to evaluate the size, shape and number of red blood cells, white blood cells and platelets. This test helps detect abnormalities such as anemia, infections, blood disorders and certain cancers like leukemia. It can also detect parasites in the blood. By providing a detailed view of blood cell characteristics, the PBS test plays a crucial role in diagnosing and monitoring a wide range of medical conditions. PBS test is often recommended along with CBC. It can also be part of a full body health checkup.



First National Diagnostic Chain to have **100%** of its Labs with **NABL Accreditation**



CAP
From 2007



Trust that Thyrocare reports are **Accurate & Reliable***



98% Reports released **Within 06 hours** after samples reach the lab

**As on 5th December 2024 | *As per a survey on doctors' perception of laboratory diagnostics (IJARIIT, 2023)*

To Avail Service

 **Thyrocare**[®]
Tests you can trust